



# Galilee Bulletin

Issue 35 · 03 Dec 2020

## In this issue



Messages



Community Links



COVID Drop Off & Dismissal Process...



Dates & Information



# Messages

## Live Love Learn

### Dear Families,

As we head towards Christmas, I wonder how everyone is coping. We only have a short time left of the school year but I know that families and staff are feeling exhausted. With restrictions easing recently we have endeavoured to provide our students with as many opportunities as we can, including: Year 5 Camp, First Eucharist, Confirmation, Graduation, excursions, Bike Education, PMP, Maths Week, Prep Transition and more. Staff are hastily planning these tasks as well as preparing for 2021. Families are also returning to offices/workplaces or still working from home. Others may have lost jobs or businesses putting a strain on finances.

While 2020 has been difficult for many, we are relatively fortunate in Australia compared to other overseas countries.

Our borders finally opening up will offer opportunities for some to connect with family and friends. My son and one of my daughters lives in Queensland and we are looking forward to being reunited after a long time apart.

Whatever your circumstance, I will be thinking of you over the Christmas period and hope that 2021 brings prosperity and happiness for us and those around the world.

### Bike Education

Congratulations to our Year 3/4 students for a successful first day of Bike Ed with Mr Hill. The students will be developing the skills they need to ride safely and independently on roads and paths.



### What is the purpose of Bike Ed?

Bike Ed aims to enable students to:

- gain knowledge and understanding of the

road traffic environment and the road rules

- develop the physical and cognitive skills to manage the road traffic environment safely as a cyclist
- develop responsible behaviours, attitudes and decision-making skills for the safe use of bicycles both on and off the road through participation in enjoyable learning experiences relevant to their ages and abilities.

Bike Ed inspires children to develop their bicycle riding skills and their physical capability. Other benefits include enhanced health, fitness and wellbeing, confidence and independence and learning and social development.

## Staffing

Shelley Blignaut joined Galilee for what turned out to be an extraordinary 2020.

She fitted in seamlessly, working with students in OT and supervised students throughout lockdowns.

Shelley has decided not to return to Galilee to expand her

own business.

I thank Shelley for her time at Galilee and wish her the best for the future.

Click the link below for a full list of 2021 Staffing.

Please note that Transition begins tomorrow and it is not possible to take requests for classroom teachers.

 2021 Staffing .pdf

## Student Leaders

As we approach the end of 2020 it is time to say goodbye to our Year Six leaders.

Although they faced challenges in their roles this year due to COVID, they persevered, and have performed their responsibilities in new and creative ways.

Student leadership positions for 2021 will be announced on Dojo on Tuesday the 15th December, after our current Year Six Leaders have fulfilled their duties.

Current Year Fives will be informed of the decisions in class and will be officially presented with their badges during the Week Two Assembly in 2021.

There are a number of Leadership positions that have not yet been filled, and as such, students who did not receive their preferred role will be provided with the opportunity to reapply for the remaining positions.

## Wellbeing

### Habits and Habits

By understanding which of your habits make other habits possible, you will be able to focus on building those ones which matter. Habits which enable you to develop other habits are called Keystone Habits. For example, writing in your journal/planner as a habit enables you to plan what you need to get done and when it has to be finished. You can also write in when you will exercise and spend time with friends.

 Healthy Habits

## Building Update

Today a message has been sent home on DOJO with a recording of last week's meeting with CHC Architects regarding our Building Project. A design was shown and questions were answered. We are still to appoint a builder and until this time, a clearer picture of the site management will not be confirmed. However, we are expecting that the majority of the current play space will be available to students throughout 2021. A completion date is yet to be determined but we are hopeful of it being finished by the beginning or very early in the 2022 school year. While some families may have further questions about the impact upon play space and learning in 2021, I encourage you to focus on the ***bigger picture of a 'once-in-a-generation' facility that will benefit our school for many generations.*** The project is the largest grant given to a Victorian Catholic Primary School and will be a wonderful addition to the students of Galilee for many years to come. A letter will be sent home next week regarding the building

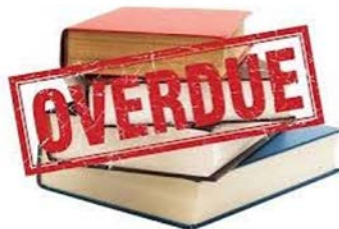
Project which will include: considerations for 2021 site management and Frequently Asked Questions from the Parent Forum. It will also be attached in next week's Bulletin for your reference.



## Library Books

All library books are due back tomorrow, Friday 4th December.

Have a look in your home learning packs, on desks, on bookshelves, under beds etc., as there are many missing from the beginning of the year.



## Uniform Reminder

Any student with hair at shoulder length or longer, must have it tied back as stated in our Uniform Policy.

## Wine Drive Fundraiser Extended

Great news! The wine drive has been extended until Monday 14th December.

Don't forget to use the GALILEE code for 20% off!



### GALILEE PRIMARY SCHOOL FUNDRAISER WINE DRIVE

Purchase some great wine from Pizzini and support Galilee Primary School.

Pizzini have kindly opened their entire wine list to the Galilee School Community at a 20% discount.

Simply visit [pizzini.com.au](http://pizzini.com.au) and use promo code GALILEE at checkout

Please share this offer with family and friends as percentage of sales will go to Galilee Regional Catholic Primary School.



## End of Term

A reminder students will finish at **1.30pm** on the last day of Term 4, **Tuesday 15th December**. If you need GOSH for from 1.30 onward, please book with TheirCare - <https://theircare.com.au/>.

Please note **dates for 2021**, including term dates, closure days, camps and other key events are on the Dates and Information page of this and

future bulletins. Spread the word to those who don't regularly read the newsletter.

## Prep Christmas Party



## D.O.G.S Christmas



### D.O.G.S. Christmas / End of Year - Social Night

Next Thursday 10th Dec from 7pm onwards at Bells Hotel.

The end of year catch up is always a good night and one not to be missed.

If you have not been to a D.O.G.S. event all year, make a point of coming to this.

It would be great to see as many guys from all year levels attend.

Come along for a few laughs, a drink and / or counter meal. The school community as a whole benefits from the connections made at these events.

Please RSVP by next Tuesday.

Email: [dogs@gsm.vic.edu.au](mailto:dogs@gsm.vic.edu.au)

Text: 0418 171 832

## Scripture of the Week



## Advent 2020

We are now in the season of Advent. Advent is the preparation time before Christmas, similar to Lent being the preparation time before Easter.

With your family you may wish to create an Advent wreath and

light a candle for each week of Advent.

You may like to create an Advent calendar and delight in creating ways you can all enjoy the 'Joy of Giving' to each other, the school, the parish and wider community as you journey together through Advent.

### Advent Calendars

You may like to display the Nativity scene in a place of prominence in your home as a focus on the coming of the promised Messiah, Jesus. Jesus is the reason for the season!



## Year 6 Sacrament of Confirmation

We are very happy that the Sacrament of Confirmation will go ahead this year and that we have been able to collaborate with Fr. John and Fr. Hugh to celebrate these Sacraments with many of our students!

With regulations only changing in the last few weeks, we thank

Fr John, Fr Hugh, Mrs Rochecouste, Miss Biggs and Mrs Ferguson for their flexibility and determination that the students have this opportunity. Not every family will choose to participate at short notice but for those who do, they will be able to complete the Sacrament of Confirmation with their primary school friends.

**Sacrament of Confirmation for the families at Sts PP**

**Parish.**

The students at StSPP will receive this sacrament on Wednesday 9th of December at 9:15am.

**Sacrament of Confirmation for the families at OLMC.**

The students at OLMC will receive this sacrament on

Thursday 10th of December at 9:15am.

Please contact your child's teacher or Helen Rochecouste if you have any questions, hrochecouste@gsm.vic.edu.au.

**Simon Millar**  
***Principal of Galilee***



# COVID Drop Off & Dismissal Process and Protocols

## Drop Off/Dismissal

### **Morning Drop Off**

- 8:35am Siblings (family groups) arrive

Prep siblings are to enter via Learning St gate and go straight to their classroom

Years 1-6 siblings enter via the main gate and go straight to their class.

- 8:40am - 8:50am All non-siblings arrive. Preps enter via Learning St gate and go straight to their classroom Year 1-6 enter via the main gate and go straight to class.
- No parents/visitors will be allowed on the school grounds.
- Parents are asked not to gather in groups outside the school gates and to observe social

distancing.

### **Afternoon Dismissal**

- 3:00pm all siblings from all year levels (including those in the same year level, ie: twins, triplets) are dismissed.
- 3:10pm Prep and Year 1 students are dismissed.
- 3:15pm Year 2 and Year 3 students are dismissed.
- 3:20pm Year 4, Year 5 and Year 6 students are dismissed.
- Parents are asked not to gather in groups outside the school gates and to observe social distancing. No dogs to be in school grounds.

Parents/Guardians are asked to please follow the directions of staff for dismissal:

1. Parent/Guardian will enter the school grounds through the school gate when directed by a staff member.
2. Parent/Guardian will maintain social distancing along the brick pathway.
3. When Parent/Guardian get to the front of the line on the brick pathway, they will collect child/ren.
4. Parent/Guardian and child/ren will exit through the big gate.

### **Late comers**

- If your child is not at school by 8:50am and therefore will be late, there will be no admittance to the school grounds until 11:45am. This is due to the unavailability of staff to supervise late arrivals.
- We ask that you only use the Bank Street Entrance and you ring the doorbell once when you arrive.
- A staff member will meet you at the school gate and students will be escorted to the office.

### **Early pickups**

- We strongly advise against students leaving school early.
- We ask that if at all possible you schedule medical appointments outside school hours; however, if this is unavoidable you must pick up your children at the following times:  
11:45am or 1:40pm.
- We ask that only use the Bank Street Entrance and you ring the doorbell once when you arrive.
- A staff member will meet you at the school gate with the student.

## **Student On-Site Protocols**

- **COVID-19 symptoms upon arrival:** Students presenting any COVID-19 symptoms including fever, cough, sneezing, temperature, runny nose will not be cleared for entry
- **Masks:** As per CEM directives, students will not be required to wear a mask, however, families may choose for their child to wear one.
- **Arrival:** Parents are to arrive at school with their child and remain with their child until they have been cleared to enter the premises.
- **Social distancing:** Parents, students and families must not congregate at the school gate before or after school. They must maintain 1.5 metres distance from other people when waiting for the school to open or close.
- **COVID-19 symptoms throughout the day:** Students who develop any COVID-19 symptoms including fever, cough, sneezing, temperature, runny nose throughout the day will be immediately isolated with visual supervision. Parents will be contacted to collect their child immediately.
- **Playground/shared equipment:** As per CEM directives, students may use the playground and shared classroom equipment.
- **Washing hands:** Students are to wash hands thoroughly with soap, for 20 seconds, after sneezing, coughing, going to the bathroom and before and after eating.
- **Drinking Taps:** Students may not use the drinking taps and must have a drink bottle at school
- **Physical Distancing:** Students should practice physical distancing where possible. Maintaining a physical distance of 1.5 meters will not always be practical in the school environment and this may be particularly challenging in the younger years of primary school.





# Community Links

## NAIDOC Week

Congratulations to Peter and Paul in Year 2 for winning a prize in the City of Port Phillip NAIDOC week competition. Check out their amazing entries below:



## TheirCare

Since Gosh has relocated to the hall, the children have been overly excited and happy to be in our new space.

'Scooby- Doo Where Are You' Week was in full swing. Lily, Jessica, Max and Lara created some Scooby Doo characters

out of popsicle sticks and paper.

The children have been doing lots of group games outside like Golden Child, Poison Ball, Dodgeball and so much more. It was great to see Willow, Matilda and Oliver stepping up by organising the group games, explaining the rules, including other children and encouraging their teammates.

For arts and crafts Lily, Maya, Vivienne, Francesca all loved doing the coffee filter art. They loved how the colours joined together once little bits of water was added.

The children have also been getting into the Christmas spirit by making Christmas decorations, fans and Christmas wreaths. Jenny (educator) has been introducing some new arts and crafts to our service.

Oliver and Henry took on the responsibility by organising the Scooby- Doo Scavenger Hunt and asked Gemma to print out some dog paw print templates to stick on the ground. The boys used effective communication to discuss where to hide the green gems, blue gems, gold gems and silver gems around in the outdoor area.

The outcome was unbelievable, the children spent over an hour taking part in the activity. Sofia was jumping up and down with excitement when she found a gem!

To end our busy and creative week Letitia got all the children to find a space to lay on the floor ready for some deep breathing meditation, eyes closed and exhaling.



TheirCare holiday program now open for bookings <https://theircare.com.au/>

TheirCare where kids love to be! The place to be these Summer holidays!

**Globe Trotting**

World Dance, Africa, Africa Drumming, World of Music

**Holiday Program Bookings Now Open!**  
1300 072 410 [www.TheirCare.com.au](http://www.TheirCare.com.au)  
Save up to 85% with the Child Care Subsidy



## Seeds and Sprouts 2021

If you have already emailed through your Expression of Interest, you do not need to resend it. Application forms will be available from 2021 and will be emailed out to those who are on the Expression of Interest List. Application forms will also be given out in the 2021 Open Morning Packs.

SEEDS Program 2021.pdf

SPROUTS PROGRAM 2021.pdf

## Sacre Coeur

*Empowering young women = the Sacré Coeur way*

At Sacré Coeur we believe that a commitment to academic endeavour and a strong sense of self leads to student excellence. Which is why we are pleased to offer our 2022 scholarships. We are looking for students who will build on our inclusive and diverse student community and are committed to living the Sacred Heart Values. There is a variety of scholarships available and applications close 5 February 2021. Visit [sac.vic.edu.au/scholarships](http://sac.vic.edu.au/scholarships) today to find out more.

**2022 scholarships now available**

General Excellence Scholarships: Years 7 - 11  
Academic Scholarships: Year 7  
Music Scholarships: Years 7- 10

## One Tree Defence Childcare

**One Tree Defence Childcare Unit**  
Coventry  
Vacancies available

As a not-for-profit and community minded service we provide a warm, welcoming and safe environment where children can explore and develop. We have a funded kinder program and welcome all children from the community.

We provide healthy, nutritious meals. Nappies and sunscreen are also provided.

Operating Hours: Mon - Fri: 7am to 6:30pm. We are closed on public holidays and two weeks over Christmas.

For enrolments please contact:  
**1800 270640 or (03)9282 5009**

32 Coventry Street, Southbank, VIC, 3006  
[www.dcu.onetree.org.au/](http://www.dcu.onetree.org.au/)



# Dates & Information

**\*\*Dates and Times may change.**

## Parent Calendar

<http://www.gsmelbournesth.catholic.edu.au/page/179/Calendar>

## Term Dates

**Term 4** - Mon Oct 5 - Tuesday Dec 15, 1.30pm

**Term 1 2021** Feb 1 - April 1, 1.30pm

**Term 2 2021** April 19 - June 25, 1.30pm

**Term 3 2021** July 12 - Sept. 17, 1.30pm

**Term 4 2021** October 4 - December 14, 1.30pm

## Term 4

December 2 - Prep 2021

Transition Session 7:

(surnames A-K), 2-2.50pm

December 4 - Year 1-5

Transition

December 7

- Yr. 6 Graduation Mass onsite, Candle Ceremony (Year 5 & 6 staff and students only, parents will be sent a link so they can watch the ceremony remotely)

- Bike education

December 9 - Prep 2021

Transition Session 7:

(surnames L-Z), 2-2.50pm

December 11

- Year 1-5 Transition day 2

- Yr. 6

Graduation dinner and disco (A

link will be sent to Year Six

parents so they can watch the

speeches and awards

remotely)

December 14 - Guard of

honour 1:30pm for Yr. 6

students

December 15 - End of school

year, 1.30pm

## Term 1 2020

Jan 28 & 29 - Student testing days Years 1-6

Jan 29 - Prep Orientation 9-11am

Feb 1 - All students begin Term 1

- Meet the Teacher 2-

7pm (students finish 1.30pm)

Feb 3 - Meet the teacher 2-5pm

- Preps not at school

- Welcome Evening 5-

7pm

Feb 5 - Beginning Of School

Year Mass 9.15am

- Canberra Camp Parent

Information Session 3.00pm

Feb 10 - Preps not at school

Feb 16 to 19 - Year 6 Camp

Feb 17 - Preps not at school

Feb 19 - Angahook Camp

Parent Information Session

3.00pm

Feb 24 - Preps not at school

March 1 - Preps at school full

time

March 3 to 5 - Year 4 Camp

March 5 - Merricks Camp

Parent Information Session

3.00pm

March 8 - Public holiday

March 11 & 12 - School closure days

March 16 to 19 - Year 5 Camp

April 1 - End of Term, 1.30pm

## School Closure Days

### 2021

March 11 & 12

June 11

November 1

November 26

## Cancelled Term 4 Dates

The following events have been **cancelled** due to the ongoing COVID restrictions and based on the Victorian Government's roadmap to reopening and CEM guidelines. We look forward to being able to meet and strengthen our community relationships at the beginning of 2021.

### Wednesday 2nd December:

Carols

### Saturday 12th December:

Parent End of Year / Christmas

Celebration (formerly Saturday 22nd August)

## Camp Dates 2021

Year 6 Canberra - Feb 16 to 19

Year 4 Angahook - March 3 to 5

Year 5 Merricks Lodge - March 16 to 19

Year 3 Zoo Snooze - November 23 to 25 (class day to attend TBC)

## Medical Consent Form

Please use this form if your child needs to take any temporary medication at school (antibiotics, eye drops, Ventolin, creams or lotions etc.). All medication **MUST** be bought to the office.

 Medical Request 2020.pdf

## School Uniform

Please read the policy below if you are unsure of the correct wearing of the Uniform. Students who are in incorrect shoes, with a note, must be for a maximum of one week. Correct shoes are to be worn till the end of the school year (it is not acceptable to be in incorrect shoes to save

purchasing of new shoes towards the end of the school year).

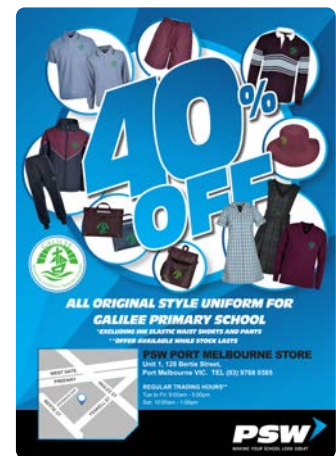
Microfibre jacket can only be worn with the Sport Uniform or over the jumper for extra warmth.

### Galilee Uniform Policy:

[http://www.gsmelbournesth.catholic.edu.au/uploaded\\_files/media/1517278888uniform\\_policy.pdf](http://www.gsmelbournesth.catholic.edu.au/uploaded_files/media/1517278888uniform_policy.pdf)

**PSW Uniform:** 1/128 Bertie Street, Port Melbourne 9768 0385

 PSW.pdf



### Second Hand Uniform @ Galilee

Not open at the moment until further notice.

## **Galilee Out of School Hours (GOSH)**

this

link:

<http://theircare.com.au/>

To register and book for your child to attend before or after school care, please do so via