



Galilee Bulletin

Issue 19 · 24 Jun 2021

In this issue



Dates & Information



Drop Off & Dismissal Process and Pr...



Messages



Community Links



Dates & Information

****Dates and Times may change.**

Parent Calendar

<http://www.gsmelbournesth.catholic.edu.au/page/179/Calendar>

Term Dates

Term 2 2021 April 19 - June 25, 1.30pm

Term 3 2021 July 12 - Sept. 17, 1.30pm

Term 4 2021 October 4 - December 14, 1.30pm

Early Pick Up Times

If you are picking up your child before the school day finishes, please collect at either 10.30am or 1.30pm. It is appreciated if you can email your child's teacher and the office of your collection time.

Term 2

June 25 - **End of term 1.30pm finish**

June 25 - P-2 Disco 5-6pm 3-6 Disco 6.30pm - 7.45pm

Term 3

July 12 - School closure day

July 13 - Students begin Term 3 - Soccer Lightning

Premiership

July 14 - Netball Lightning Premiership

July 15 - Football Lightning Premiership

July 19 - Student/Parent Conferences 2-7pm (students finish 1.30pm)

July 21 - Student/Parent Conferences 2-5pm (students finish 3.15-3.25pm)

July 28 - Music Soiree 5-7.30pm Drums, Voice, Guitar, Keyboard

July 29 - Prep Transition

Session, 2.15-3.15pm

August 6 - Yr. 3/4 Hooptime

August 13 - Yr. 5/6 Hooptime

August 18 - Prep Transition

Session 2, 2.15-3.15pm

August 20 - Grandparents Day

August 26 - Family English Night

August 27 - School Closure Day

August 31 - Dendy Athletics

September 3 - Footy Colours Day

- Father's Day Breakfast & Mass

September 9 - Prep Transition Session 3

September 17 - End of Term 1.30pm

School Closure Days

2021

July 12

August 27

November 1

November 26

Sacramental Dates 2021

Eucharist

StsPP - Sunday 18th July at

1:00pm and 3:00pm for 4H and (Year 5 students who didn't make it last year)

Sunday 25th July at 1:00pm

and 3:00pm for 4R and (Year 6 student who hasn't made it yet).

OLMC - Saturday 7th August

Sacrament of Reconciliation

OLMC - Wednesday 25th

August 7pm

Confirmation

StsPP- Thursday 19 August

7.00pm

OLMC - Wednesday 18 August

7.00pm

Camp Dates

Year 3 Zoo Snooze - November 23 to 25

Medical Consent Form

Please use this form if your child needs to take any temporary medication at school (antibiotics, eye drops, Ventolin, creams or lotions etc.). All medication MUST be bought to the office.



Medical Request 2020.pdf

School Uniform

Please read the policy below if you are unsure of the correct wearing of the Uniform.

Students who are in incorrect shoes, with a note, must be for a maximum of one week.

Correct shoes are to be worn till the end of the school year (it is not acceptable to be in incorrect shoes to save purchasing of new shoes towards the end of the school year).

Microfibre jacket can only be worn with the Sport Uniform or over the jumper for extra warmth.

Galilee Uniform Policy:



GRCPS Uniform Policy 2021.pdf

Transition of New Uniform

Please see below

correspondence distributed to the school community in 2020 and earlier.

To avoid a uniform change in the middle of a season, the timeline for students from Prep-Year 5 will be the beginning of Term Two, 2022 (change from Summer to Winter uniform). This mandatory change will not be for Year 6 in 2022.

A reminder that:

- the woollen jumper, rugby top and school bag can be worn/used for the duration of its lifetime as it is similar to the new item,
- during the transition period, blending of the current and new uniform **IS** allowed as we are keeping the same colour scheme,
- modifications were made after consultation with the community over the last two-three years,
- we will continue to assist families financially with uniforms who are experiencing difficulty,
- used uniforms (current design) will be distributed

to overseas schools in need by PSW.

PSW Uniform: 1/128 Bertie Street, Port Melbourne 9768 0385

The new Galilee uniform is available for purchase from PSW. Items of the current uniform are on sale at a discount of 40%. Items of the current uniform can be worn until the end of Term 1 2022. Exception will be made for Year 6 students. **All other students must be in the new uniform by Term 2, 2022.**

Prices can be found on the PSW website:

<https://www.psw.com.au/schools/galilee-regional-catholic-primary-school.html?p=1>

Galilee New Uniform:



GALILEE REGIONAL CATHOLIC PS.pdf

Second Hand Uniform @ Galilee

Not open at the moment until further notice.

Lunch Orders

Attached is the lunch order list and ordering information from Renatta Catering.



Lunch Order List 2021.pdf

Galilee Out of School Hours (GOSH)

To register and book for your child to attend before or after school care, please do so via this [link: http://theircare.com.au/](http://theircare.com.au/)

Danceworld

To book your child into Danceworld lessons during recess/lunch or for more information, visit www.danceworldstudios.com/galilee or feel free to visit the studio next door to Galilee.




Messages

Live Love Learn

Dear Families,

This afternoon, Thursday 24th June, report access for parents were emailed out to families from [no-reply@nforma.com.au](mailto:reply@nforma.com.au), please check your junk folder if you have not received an email by 5pm.

The letter below was emailed to families yesterday to explain the contents and layout of Semester One Reports.

 Reports2021S1 (1).pdf

We are really proud of all Galilee students for their efforts in Semester 1 this year.

We hope all of our students have a great break and look forward to seeing them back on Tuesday 13th July.

PTO Bookings

An email was sent from tstuart@gsm.vic.edu.au on Monday titled *Galilee Student - Parent-Teacher Conferences*, with instructions on how to book a time to meet with your child's teacher on 19th or 21st July. Please check your spam if you did not receive it. This was only sent to **one parent's email** as the booking system only allows one parent to be added. The email address that received the instructions must be used to log into the PTO booking site.

Wellbeing

Tips for parenting anxious children

Support your child through reflective listening

- Give your child emotional support by effective listening, this involves really hearing and understanding their worry, how it is making them feel and how it is impacting them
- Research shows that helping your child to label an emotion is proven to lessen the stress response and decrease anxiety
- Reflective listening involves listening to your child without jumping in giving advice, being judged or emotional, and trying to problem solve

- Keep your own emotions in check, this is about the child and how they are feeling
- Reflect back by summarising both their worry and the emotion, eg. "You had a bad day and you are feeling upset with your friends"
- Once you reflect back to your child they are likely to share more
- When all feelings are expressed it is then time to help your child problem-solve.

PE Uniform in Term 3

Students will need to wear their PE Uniform two times per week so that they can participate in Physical Education lessons with Mr. Hill and an Extra Sport Session with their classroom teacher. If there are any changes to the days published below, classroom teachers will inform you on Dojo.

Prep P - Monday and Thursday
 Prep S - Monday and Friday
 Prep M - Tuesday and Friday
 Year 1B - Tuesday and Friday
 Year 1J - Tuesday and Friday

Year 2E - Wednesday and Friday

Year 2J - Wednesday and Friday

Year 2R - Wednesday and Thursday

Year 3M - Wednesday and Friday

Year 3B - Monday and Friday

Year 4H - Wednesday and Friday

Year 4R - Monday and Thursday

Year 5C - Monday and Friday

Year 6M - Tuesday and Friday

Year 6F - Tuesday and Friday

Galilee Second Hand Uniform

The Second Hand Uniform shop will be operating in Term 3 & 4.

Donations of clean and in good condition uniforms accepted **out the front of Galilee on Tuesday 20th and Wednesday 21st July from 8.35am until 8.50am.**

All older style uniforms that students can no longer wear post 2022 will be donated to a charity that will send them overseas. The Second Hand Uniform shop will be open on Wednesday 28th July from 9-9.30am. Address and future

dates will be supplied in Term 3 newsletter.

Disco

Tomorrow evening, **Friday 25th June**, our School Disco will take place in the School Hall.

P-2 Disco 5-6pm

3-6 Disco 6.30pm - 7.45pm.

We thank the parents for organising this event for our students. We would also like to thank our community for your understanding and flexibility as the date was changed because of our recent lockdown.

This event will take place in the school hall but will not be attended by school staff. The parents who have organised the event will supervise children. We hope it is a fun way to students to celebrate the end of Term Two.

Building Update

Building Project Update – Foundation for the Future

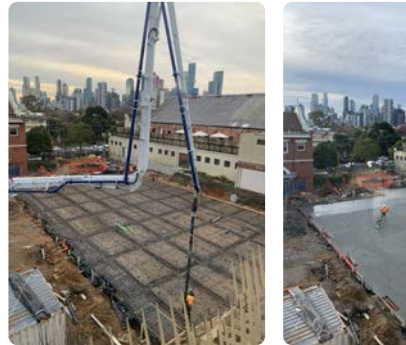
A major milestone was recently reached on the Galilee school building project currently underway.

After several weeks of preparations, which included installation of new underground services and placement of tonnes of steel reinforcement, the concrete base slab for the new 3-storey Games Hall and learning building was poured on Tuesday morning earlier this week. The concrete was transported to the school site by 25 concrete trucks delivering over 170 cubic meters of concrete weighing over 400 tonnes!

The recently completed slab provides a great foundation for the construction team to move onto the next phase of the project which will include the installation of large precast concrete panels and the main structural elements. In the coming weeks we can expect to see some significant visual changes to the site as the structure starts climbing up off the ground and the new building starts to take shape. Some recent discussions have been held by the project team on the final finishing and arrangement of our new basketball court to accommodate the many sports played by our students – this certainly makes the project feel

real and is one of many areas we have to look forward to when our new facility is finished.

The project is on track to be completed in Term 1 2022.



Year 6 Class Report

In Year Six we've been learning about persuasive writing and how we can be more persuasive. One way we can do this is with persuasive devices. Please read the attachment by Anna from 6F about some other devices they have learnt about.

 By Anna L.pdf

Parent Helpers

It is with great excitement that we will be able to welcome Parent Helpers back into the classroom in early Term 3 to assist with student learning from Prep to Year 6.

We are holding two Parent Helpers' Workshops in Week 3 of next term for parents who are new to helping in the classroom at Galilee. You will only need to attend one of these workshops. Both workshops will be online. The link to the online workshops are on the Parent Calendar. One workshop will be held on Thursday 29th July at 9.30am and the other workshop will be held on Friday 30th July at 9.30am. You will be required to attend one of these workshops, if you have not attended a Parent Helper course in the past and if you are interested in assisting in the classroom this year.

You will need a current Working With Children's Check and an availability to assist at a set time once a week. For example, every Tuesday morning. This will help teachers with forming a roster and knowing who will be helping on particular days. A committed time once a week is usually preferable as it allows both the teacher and the Parent Helper to develop a professional relationship to support all the students in the class. It also allows the Parent

Helper to develop skills by working at regular times and thus knowing the routines and expectations of the class. If you are only able to help in the classroom occasionally, this is fine too.

If you have attend the Parent Helper Course in previous years, hold a current Working with Children's Check and are interested in helping in the classrooms again this year, we will be seeking your availability in early Term 3.

We continue to value all the support and assistance from Parent Helpers and thank you in anticipation.

Lockdown 4.0

Thankyou to the many families who completed surveys on the recent remote learning models implemented by Galilee.

Surveys were also completed by staff and students from Years 2-6.

The survey last year helped us to form the model we used in 2021. We will use these results to again review our model which will hopefully be not required again.

Below is a summary of the results:

- Approximately 60% of students enjoyed working from home.
- About 70% of students felt the workload was 'just right' with some students feeling it was 'too much'. Less than 5% of students felt there was 'not enopugh' work.
- 77% of parents preferred the second model used at the end of Lockdown 4.0 (not the first grid used in week one), a view also shared by the staff.
- 184 out of 187 felt the communication from the school was clear.
- 97 parents preferred 2 daily whole class hangouts, 57 one hangout and 32 three or more hangouts.
- 80% of parents felt the work set was the 'right amount'.
- 35% of parents want specialists weekly and 32% fortnightly.

Scripture of the Week



Sacramental Dates 2021

Eucharist

OLMC - Saturday 7th August

StsPP - Sunday 18th July at 1:00pm and 3:00pm for 4H and (Year 5 students who didn't make it last year)

Sunday 25th July at 1:00pm and 3:00pm for 4R and (Year 6 student who hasn't made it yet).

Sacrament of Reconciliation

OLMC - Wednesday 25th August 7pm

Confirmation

StsPP- Thursday 19th August 7pm

OLMC - Wednesday 18th August 7pm



Drop Off & Dismissal Process and Protocols

Drop Off/Dismissal

Drop off and Pick -Ups Times

Mornings:

The Bank Street Gate (Park Street will not be available) will open at 8.35am and all students will go directly to their classrooms.

We respectfully request that parents remain outside the school grounds in the mornings.

This is due to current COVID -19 protocols, where any adult onsite for more than 15 mins must sign in for contact tracing purposes.

If you need to speak to someone, we encourage you to call the office so we can arrange an appointment time or email/Dojo you child's teacher.

Afternoons:

Please be reminded of our current times that students are to be **picked up at the end of the school day.**

- **All students 3.15pm - 3.20pm**
- **All other students riding or walking independently - 3.25pm**

It is impossible for school staff to monitor this, so we are totally reliant on our parent's cooperation.

Our reasons for the staggered times are

- to assist with parking turnover
- to be compliant with COVID-19 restrictions that aim to reduce the congregation of adults around the school and reduce congestion
- to ensure all our parents and students can leave the school safely

Galilee Wet Weather Student Collection

In the event of wet weather at the end of a school day, the following procedures will be used to ensure a safe collection of students:

- Parents/Carers to collect students from their classrooms from 3:15-3:25pm
- All Parents/Carers to enter via the school office door
- All Parents/Carers to exit via the nearest side/external stairwell after collecting child/ren
- Parents/Carers with prams or limited mobility can request the office to ring for their child/ren
- Children attending GOSH, walking or riding home by themselves will be dismissed from their classroom at 3:25pm

Year Two information:

- Parents/Carers from 2R to exit via classroom external door
- Parents/Carers from 2E to enter and exit via the same door to the Library
- Parents/Carers from 2J to exit via the new external door

Additional information:

- Staff members will be supervising those entering the building and exiting via the front gate and in the corridors
- Parents/Carers are expected to move safely and efficiently, walking throughout the school
- Parents/Carers are only allowed on site for up to 15 minutes (COVID-19 restrictions) so collection is not an opportunity to converse with teachers, staff or other parents
- In the event of a wet weather collection, parents/carers will be notified when possible via DOJO by 3pm (unless it rains after 3pm)
- Specialist teachers will return children to their classrooms at 3:10pm prior to collection
- Please see below a map of the school for collection of children

We thank everyone for their flexibility and cooperation in ensuring that pick-up is safe and efficient for all in dealing with COVID-19 restrictions.

Student On-Site Protocols

- **COVID-19 symptoms upon arrival:** Students presenting any COVID-19 symptoms including fever, cough, sneezing, temperature, runny nose will not be cleared for entry
- **Masks:** As per CEM directives, students will not be required to wear a mask, however, families may choose for their child to wear one.
- **Social distancing:** Parents, students and families must not congregate at the school gate before or after school. They must maintain 1.5 metres distance from other people when waiting for the school to open or close.
- **COVID-19 symptoms throughout the day:** Students who develop any COVID-19 symptoms including fever, cough, sneezing, temperature, runny nose throughout the day will be immediately isolated with visual supervision. Parents will be contacted to collect their child immediately.
- **Playground/shared equipment:** As per CEM directives, students may use the playground and shared classroom equipment.
- **Washing hands:** Students are to wash hands thoroughly with soap, for 20 seconds, after sneezing, coughing, going to the bathroom and before and after eating.



Community Links

TheirCare

Yay to the end of term, dear parents! On Friday GOSH will start at 1.30 pm.

Our Holiday Program starts next week, and you still can

book children at www.theircare.com.au.

Last week had theme 'You don't know me...!', during which children were showing us their talents and hidden skills.

On Tuesday we played AFL, soccer, and basketball outside, while indoors Ella, Roger, Michelle, Lara, Lily with Lily and Maya were making butterflies and some colouring.

On Wednesday afternoon Maya, Lara, Jessica, Roger, Isabella, Harriet, Sebastian, Lily and Michelle made microphones as a follow up activity for our theme. Outside Jai, Marco, Xavier and Elijah were helping Ryger to organise group games. Thursday brought us a huge group craft activity- making animals from pipe cleaners. All children took part in it! Lara N created a fantastic looking dragon, which lives on my working table now! Elijah made a chameleon, Michelle made a spider with big google eyes, as well as cat's ears and tail. Others created snails, lions,

giraffes, and fighting penguins (don't ask what it is!).



On Friday afternoon we practiced lockdown and for the first time this year children were following all the rules, were quiet, and it took us just 40 seconds to isolate and hide ourselves (23 people in total). After this drill, Matilda offered to help Ryger to organise group games, while Lara, Alexander,

and Roger were making Rainbow happy cards for their families, writing their own poems and/or wishes inside.

On this optimistic note, I'd love to wish all of you to have wonderful weekend and school holidays!
We will miss you!
Kateryna and Ryger

Simonds Catholic College

